

These Are My Best Friends





Hi, I'm Lily. I like chocolate ice cream, wearing bows and playing catch.



These are my best friends, Phillip and Mary.
Phillip loves to play soccer.



Mary likes to climb tall trees.



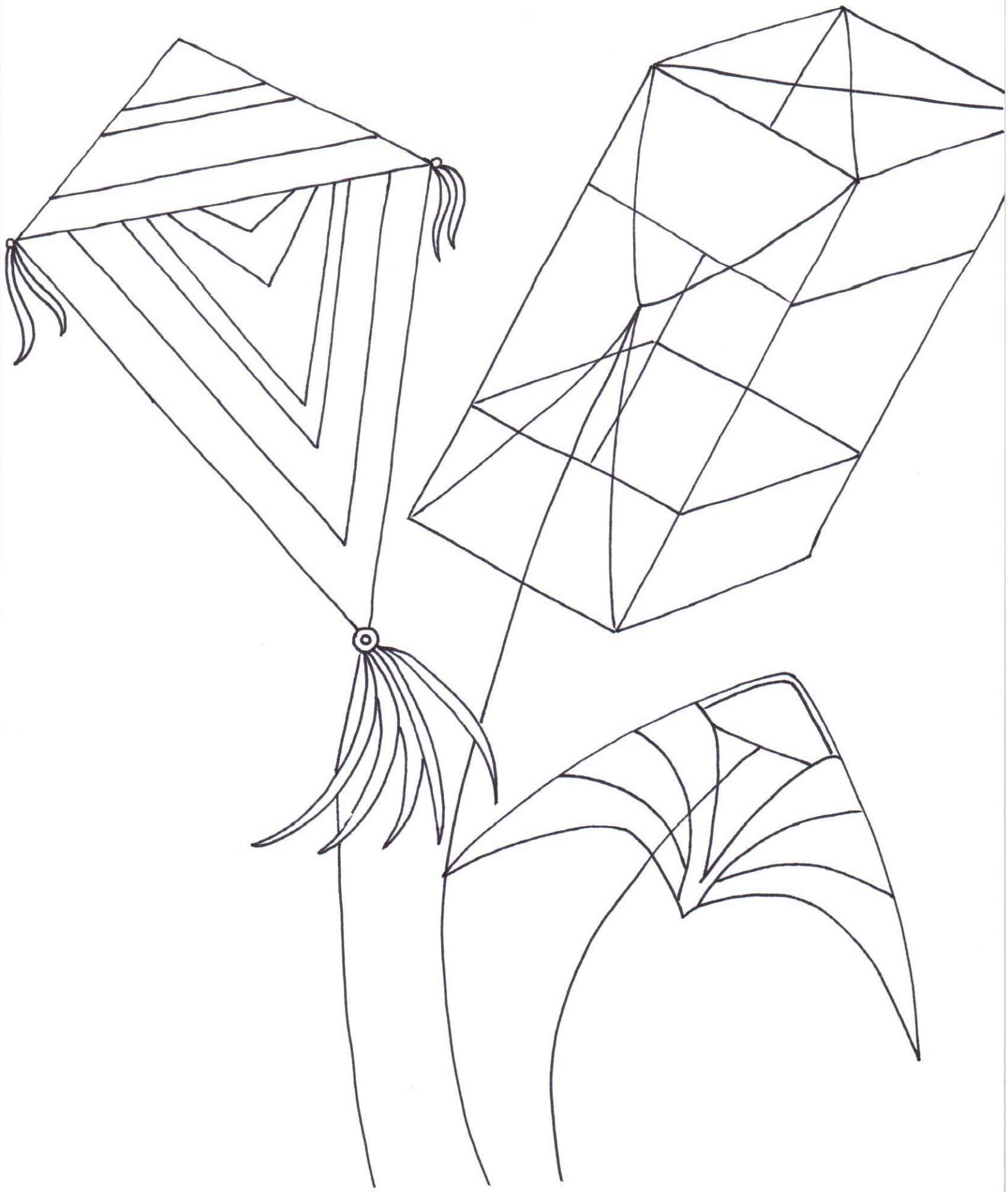
Mary and I are hard of hearing, and we need special aids to help us hear.



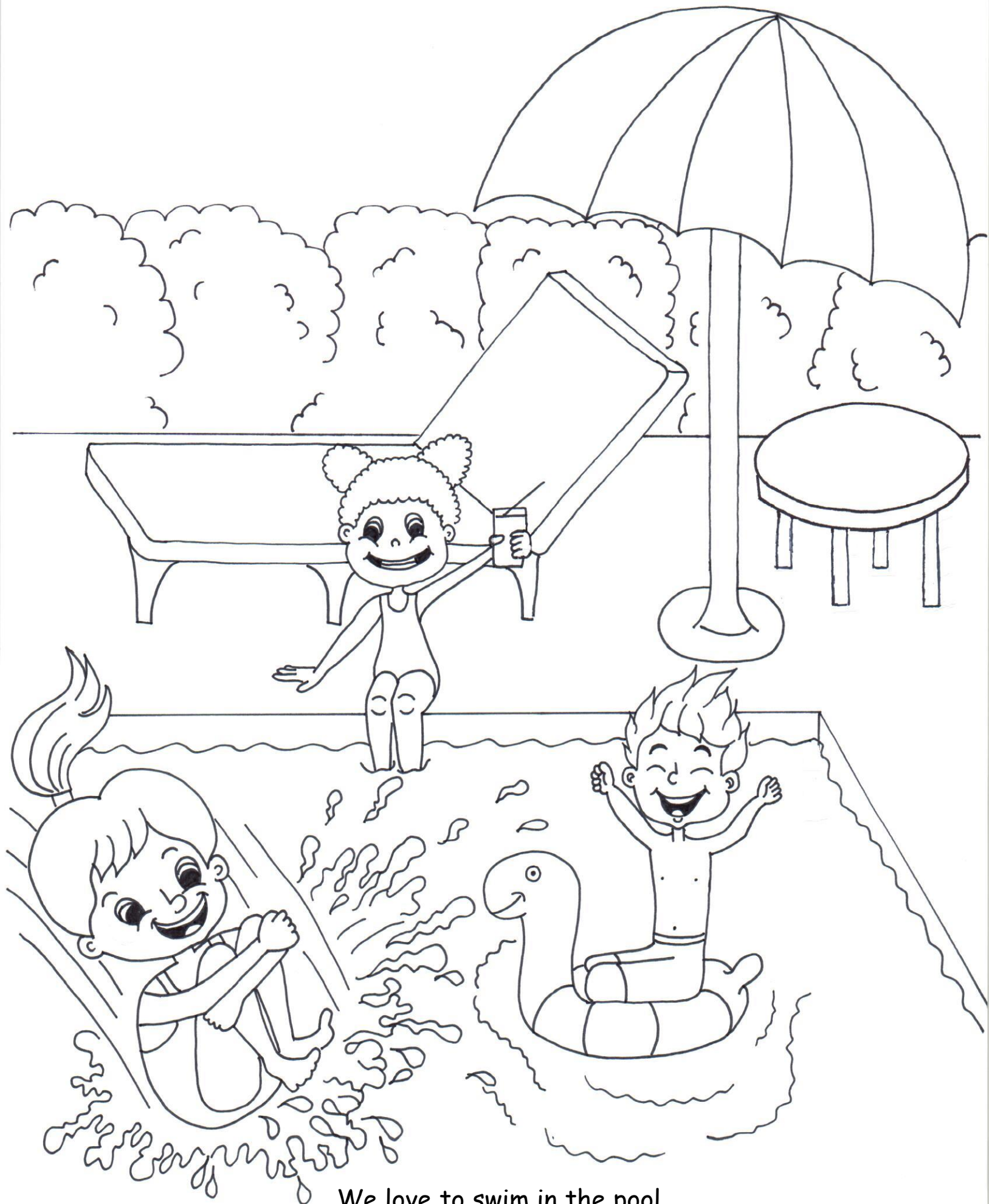
Phillip is Deaf and cannot hear at all, but he is very good at sign language. So we talk to him with our hands.



Together we make the perfect team.



We love to fly kites.



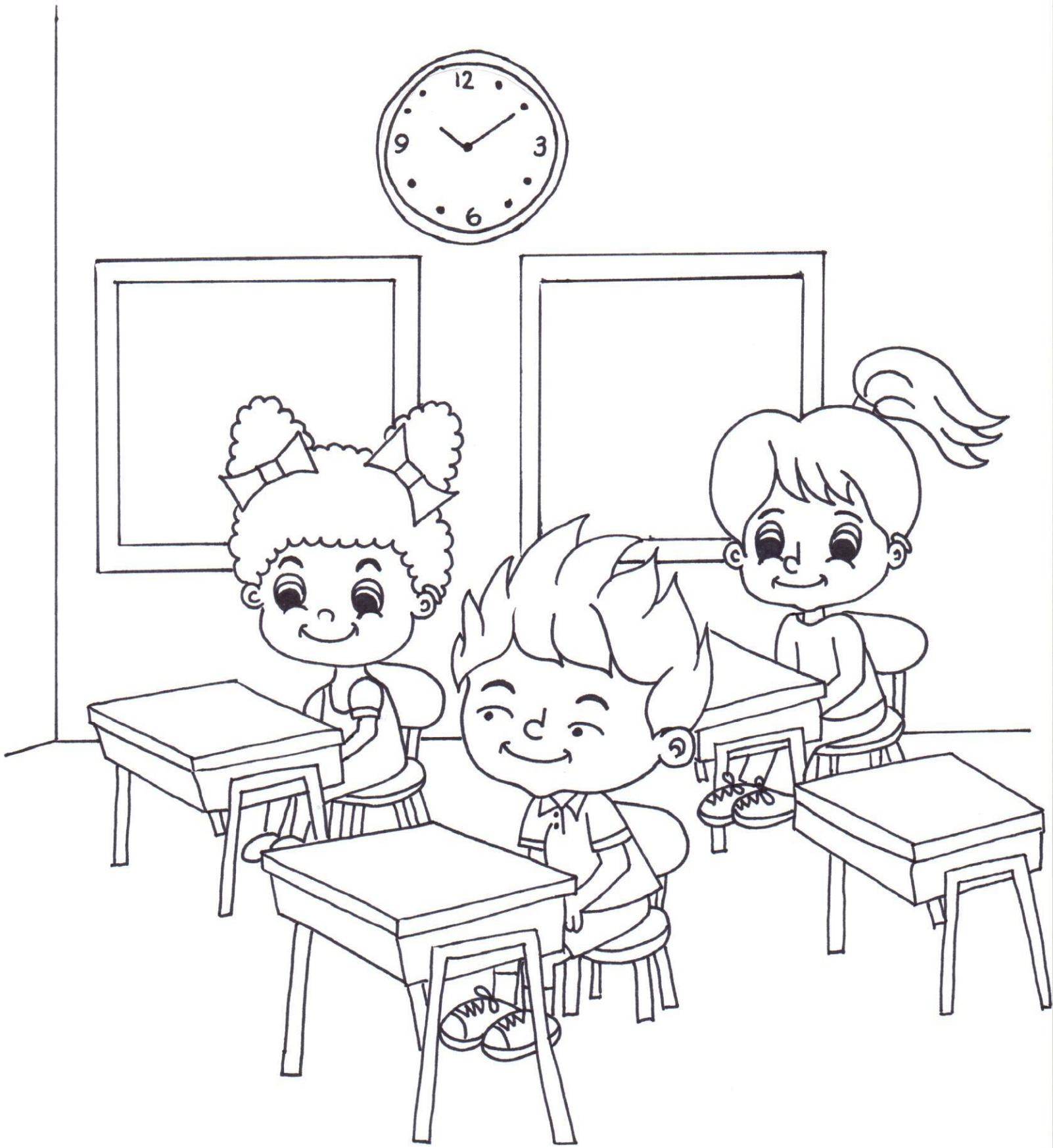
We love to swim in the pool.



We love to catch fireflies.



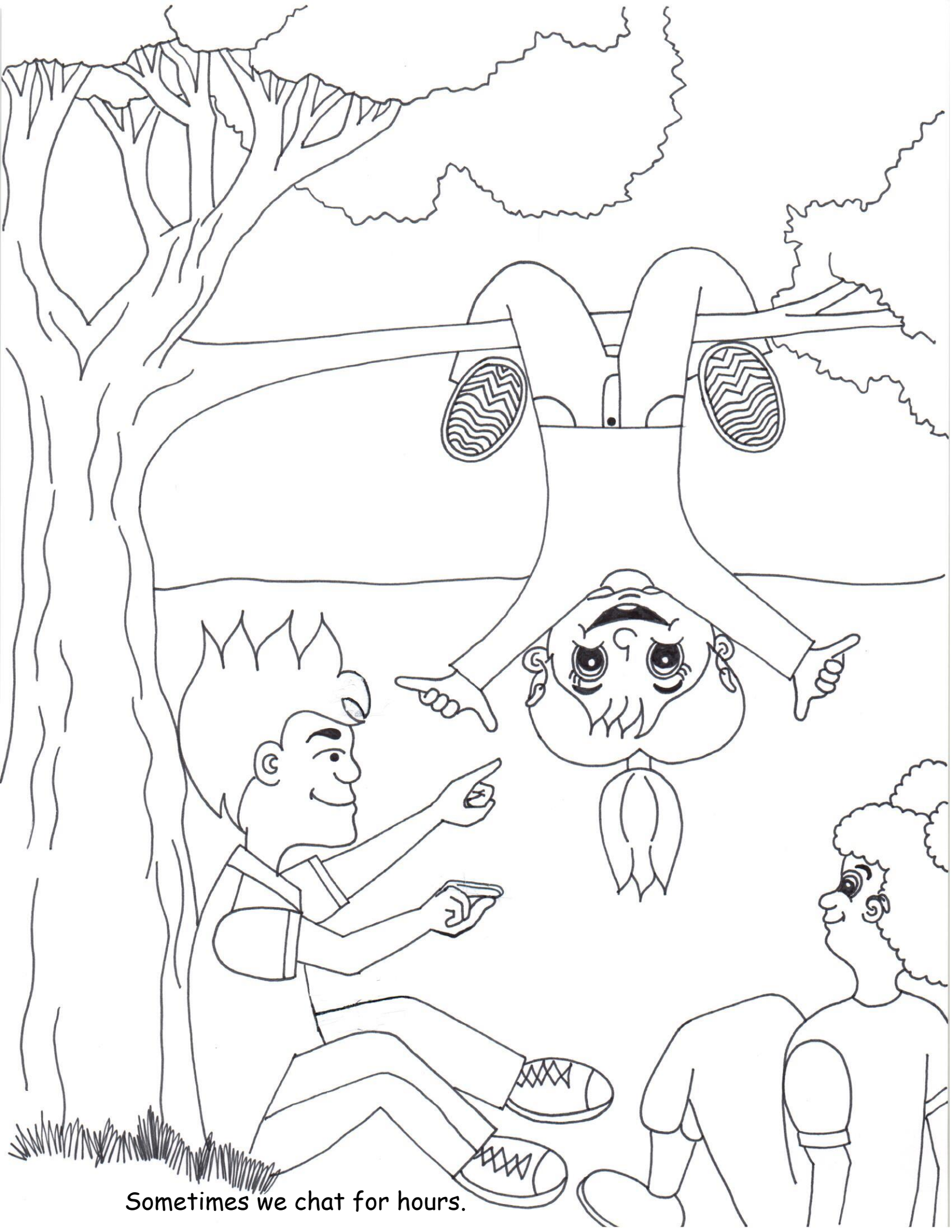
We love to sit under the tree and read comic books.



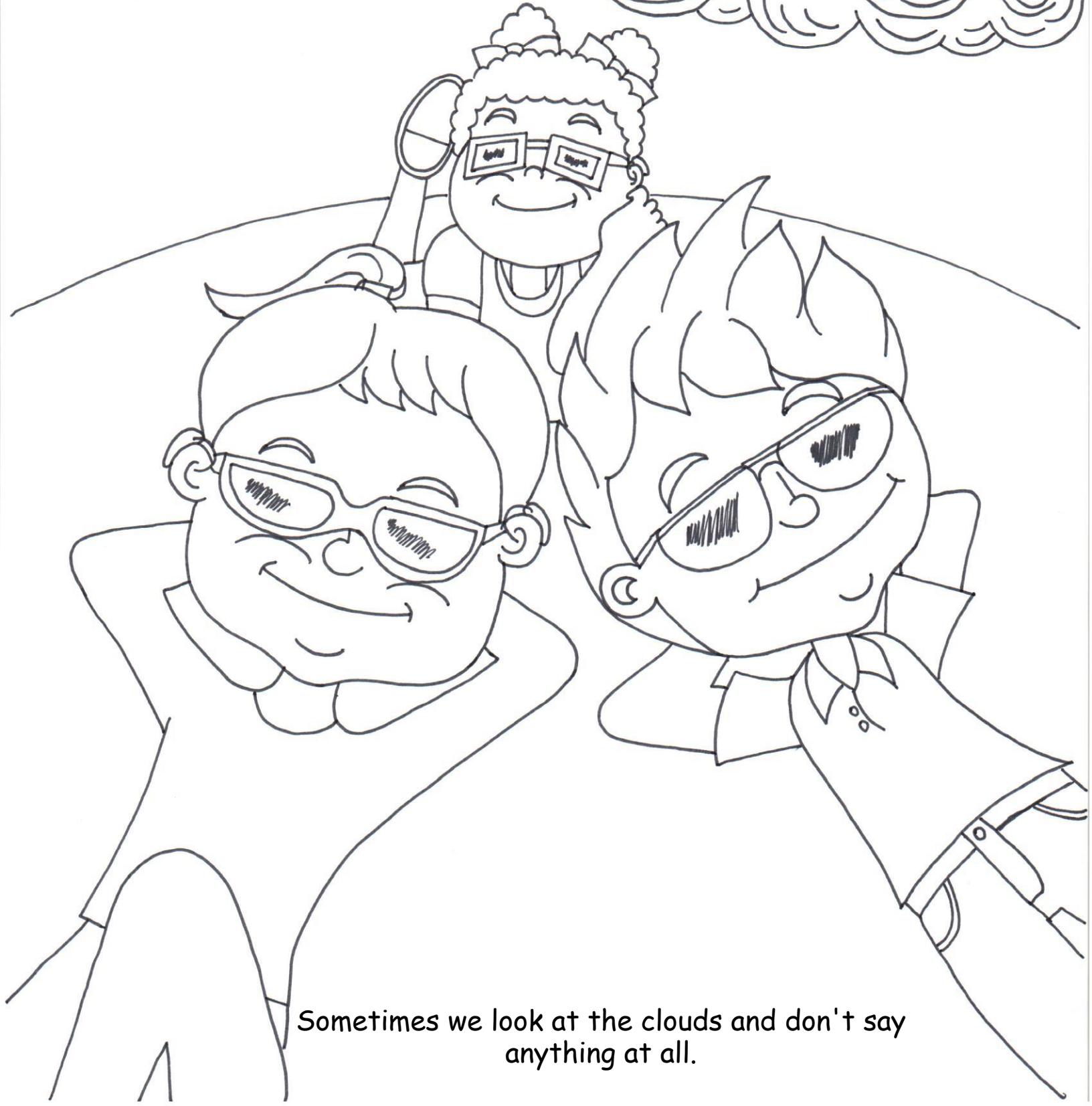
We sometimes get into trouble, but never at school.



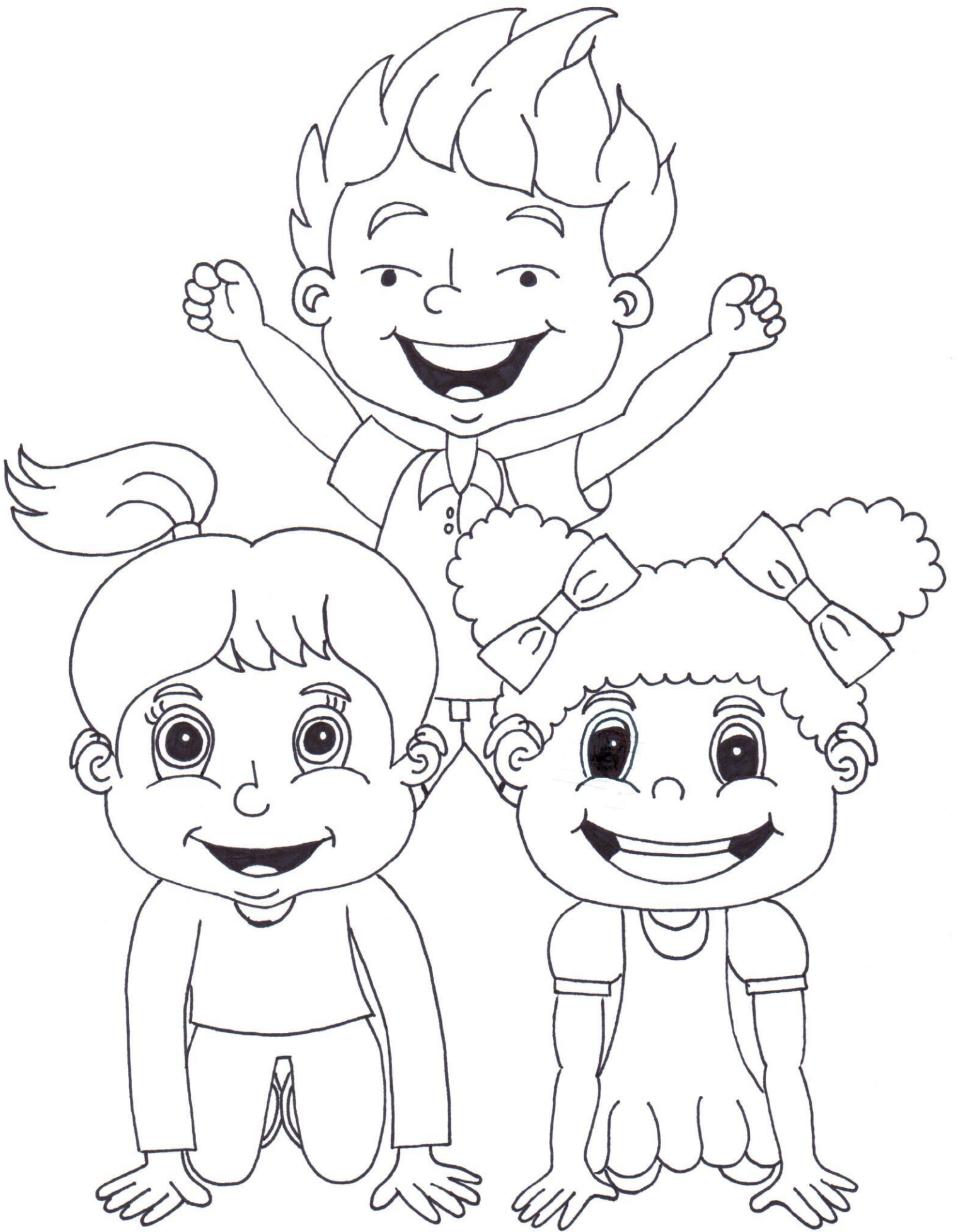
Well, almost never.



Sometimes we chat for hours.



Sometimes we look at the clouds and don't say anything at all.



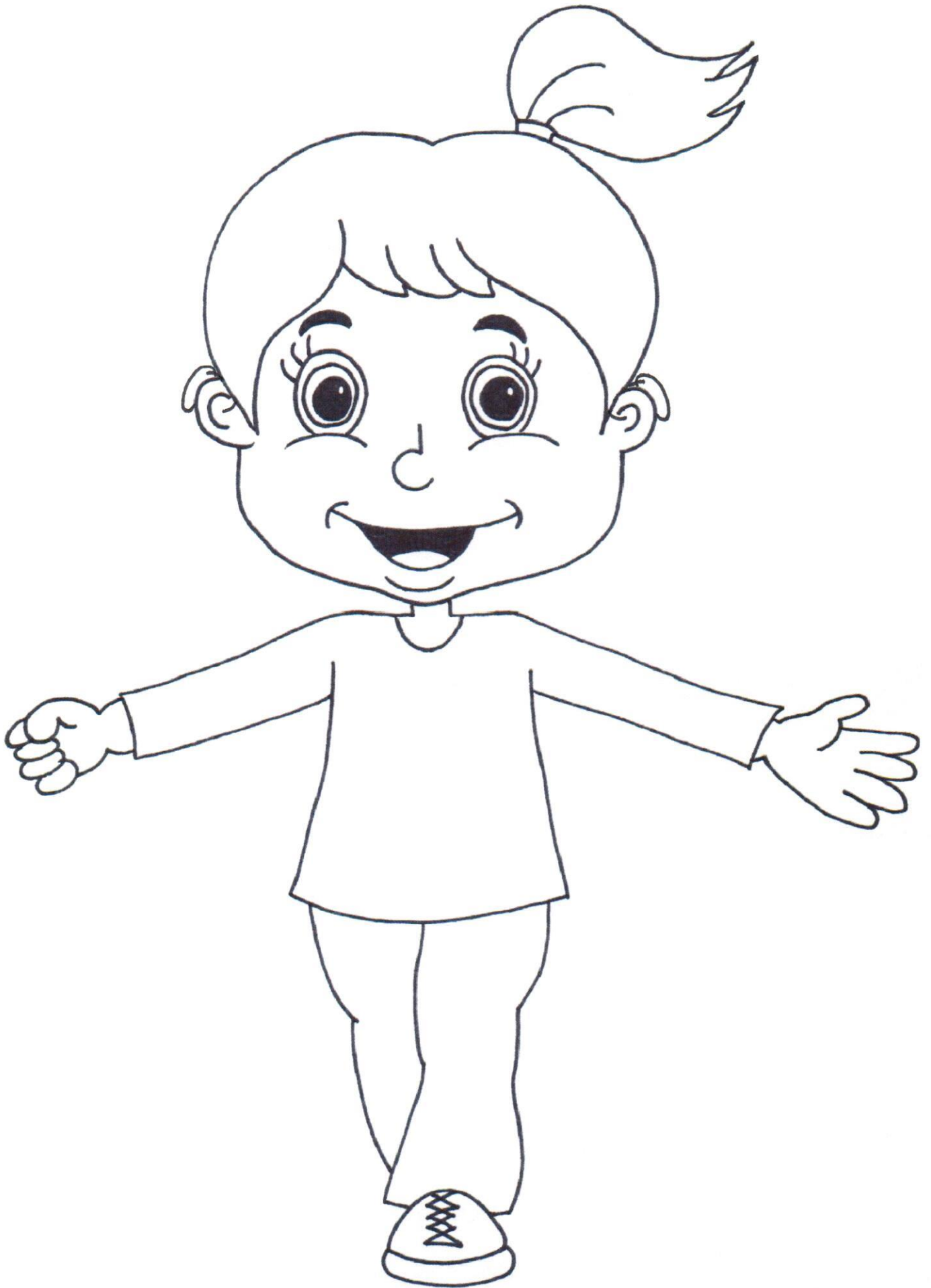
Together we can do anything.



These are my best friends.







WHICH ENGLISH ALPHABET LETTER
GOES WITH THE ASL HANDSHAPE?















































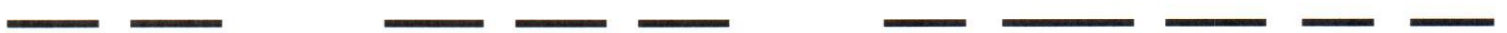
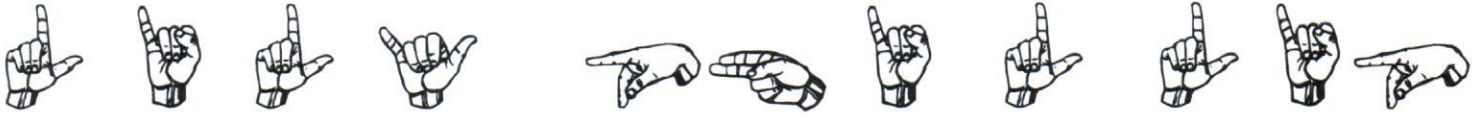




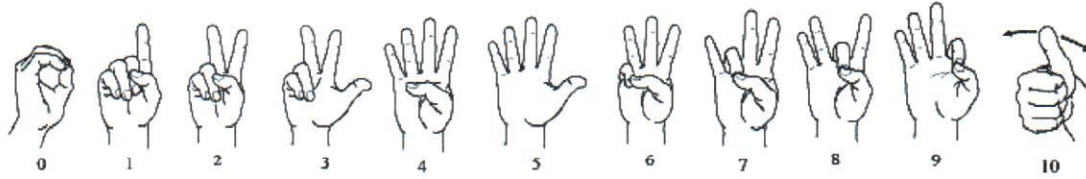




USE THE ASL ALPHABET TO FIND THE SECRET MESSAGE

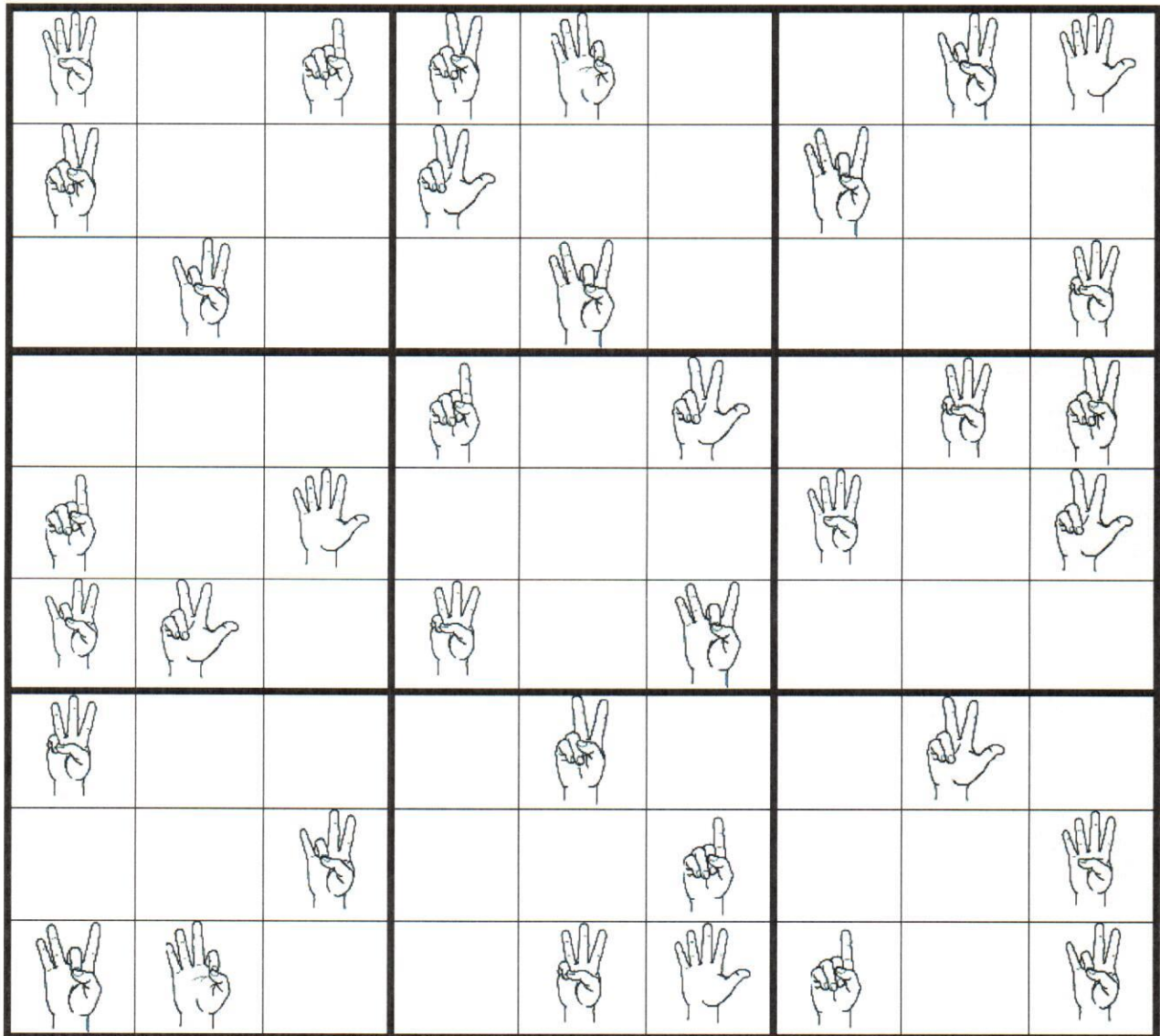


ASL NUMBERS 1-10

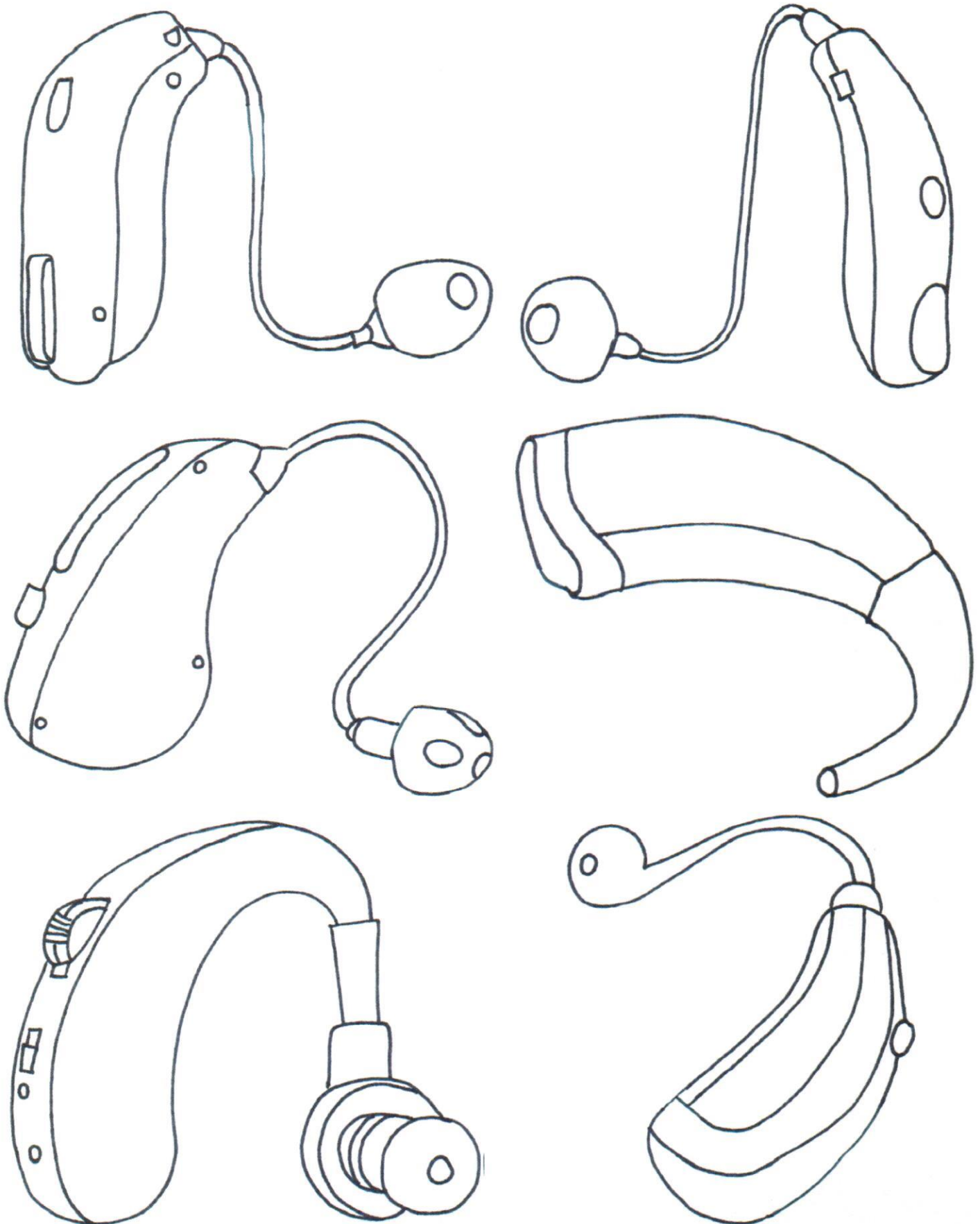


The objective of Sudoku is to enter a digit from 1 through 9 in each cell, in such a way that:

- Each horizontal **row** contains each digit exactly **once**
- Each vertical **column** contains each digit exactly **once**
- Each subgrid or **region** contains each digit exactly **once**



Hearing Aids Come in ALL Shapes, Sizes and Colors.
How would you decorate yours?



WORD FIND

S	I	G	N	L	A	N	G	U	A	G	E	R	E	H	C	A	E	T	D
A	S	D	N	E	I	R	F	T	S	E	B	A	S	H	K	H	T	E	R
F	D	L	C	L	O	U	D	S	K	M	A	E	T	R	S	C	E	C	I
E	I	E	S	A	S	C	H	O	O	L	O	S	R	X	O	R	A	H	B
D	A	I	U	W	K	L	A	W	O	A	K	O	O	B	C	I	M	O	C
I	G	F	P	S	C	O	R	E	B	S	K	Y	N	A	C	B	E	C	A
V	N	H	E	V	O	L	G	L	A	U	I	Q	G	N	E	Y	G	O	T
I	I	S	R	E	T	S	A	F	S	D	T	K	W	A	R	R	D	L	E
N	R	A	H	Z	R	C	P	M	E	R	E	T	L	N	I	R	U	A	R
G	A	L	E	A	K	T	A	A	B	U	G	S	E	A	A	E	F	T	P
B	E	P	R	B	N	E	F	F	A	N	R	B	W	R	H	H	T	E	I
O	H	S	O	T	R	D	A	L	L	I	N	A	V	I	F	C	O	C	L
A	F	A	E	C	N	U	S	Y	L	W	A	T	E	R	L	L	H	A	L
R	R	A	E	F	I	R	E	F	L	I	E	S	G	O	A	L	I	P	A
D	M	C	E	G	N	I	R	A	E	H	F	O	D	R	A	H	O	E	R
A	I	R	P	L	A	N	E	L	O	O	P	G	N	I	M	M	I	W	S

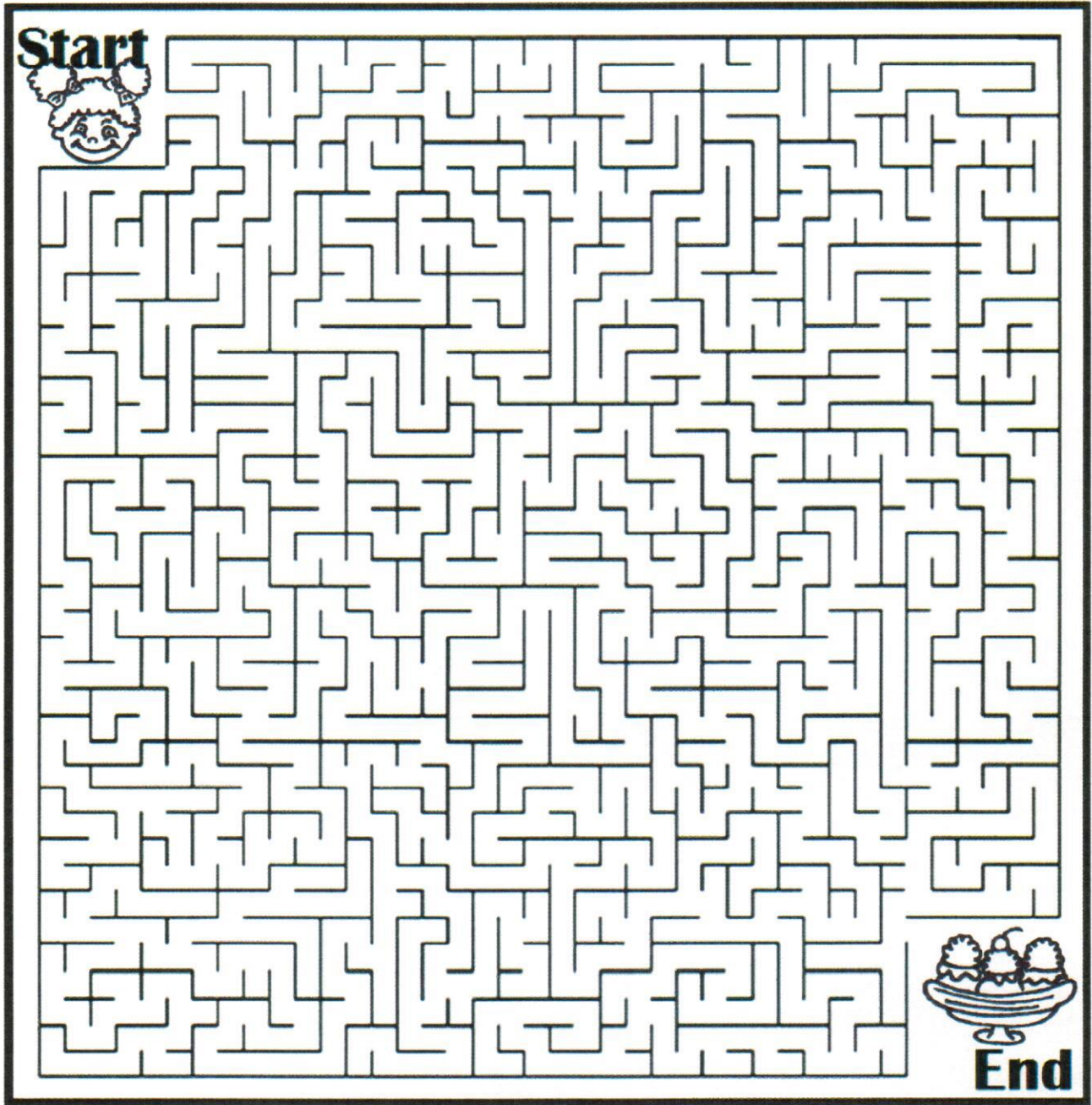
Airplane
Ash
Banana
Baseball
Bat
Best Friends
Birch
Bird
Blackboard
Books
Bugs
Butterflies
Cape
Caterpillars
Chalk
Cherry
Chocolate
Clouds
Comic Book

Deaf
Diving Board
Fast
Field
Fireflies
Fly
Glove
Goal
Hair
Hands
Hard of Hearing
Hearing Aid
Hot Fudge
Ice Cream
Kite
Leaf
Moon
Oak
Run

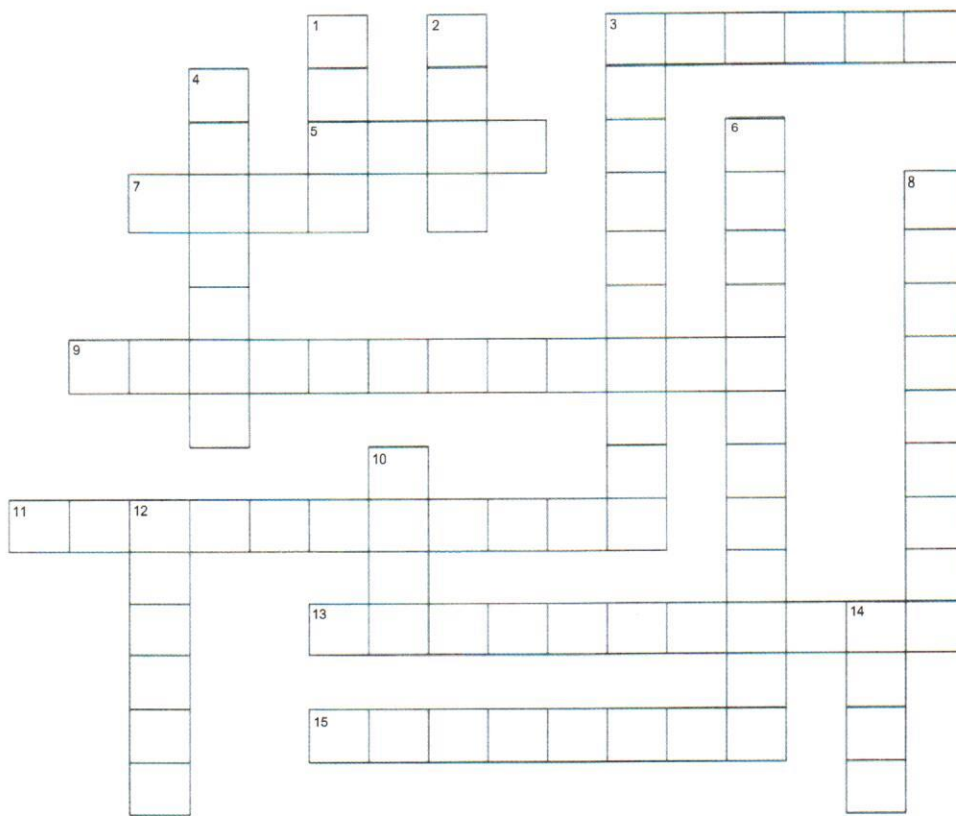
Safe
School
Score
Sign Language
Sky
Soccer
Splash
Strong
Sun
Superhero
Swimming Pool
Teacher
Team
Tree
Vanilla
Walk
Water
Willow



Help Lily find her ice cream treat.



CROSSWORD PUZZLE



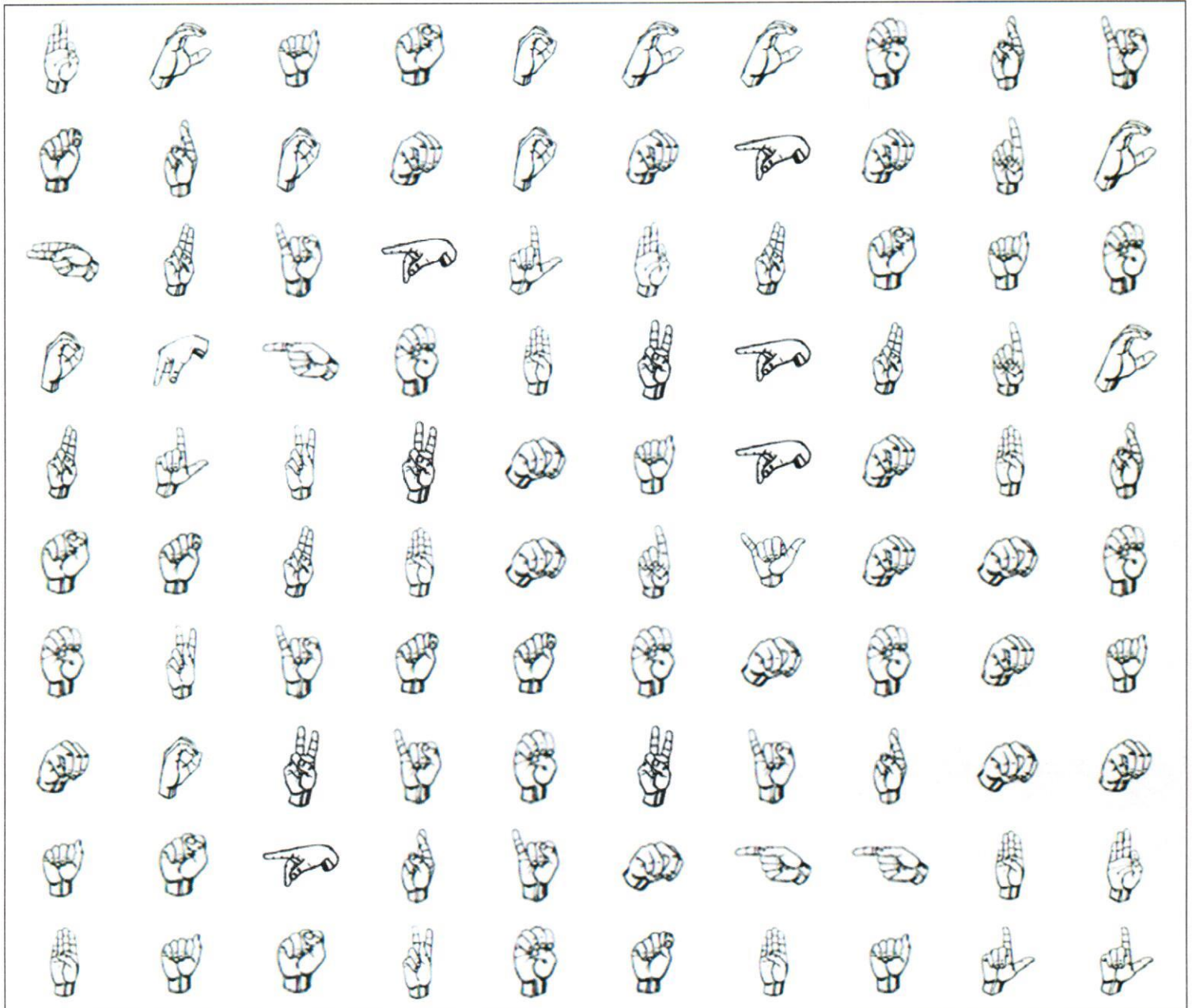
ACROSS:

- 3 – White Fluffy Things In The Sky.
- 5 – We _____ comic books.
- 7 – Who Likes Bows?
- 9 – A Place With Lots Of Water.
- 11 – Lily, Mary and Phillip are?
- 13 – What Lily And Mary Use To Hear.
- 15 – Where Do The Kids Like To Read?

DOWN:

- 1 – Who Likes To Climb Trees?
- 2 – Short Talk.
- 3 – What Do The Kids Like To Read?
- 4 – Who Likes To Play Soccer?
- 6 – Talking With Their Hands.
- 8 – What Do The Kids Like To Catch?
- 10 – Fly High In The Sky.
- 12 – Phillip Plays.
- 14 – Phillip is?

ASL SIGN WORD FIND

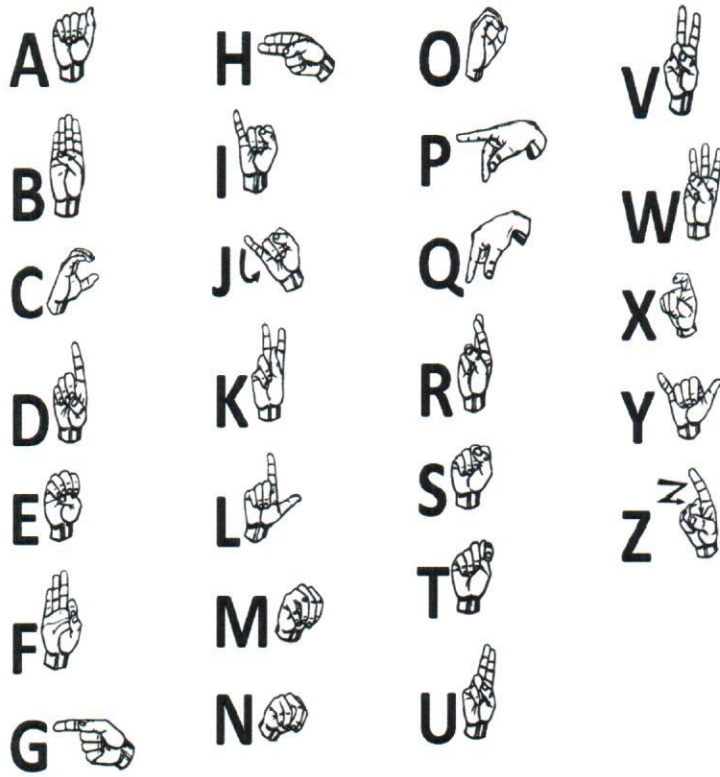


WORD LIST:

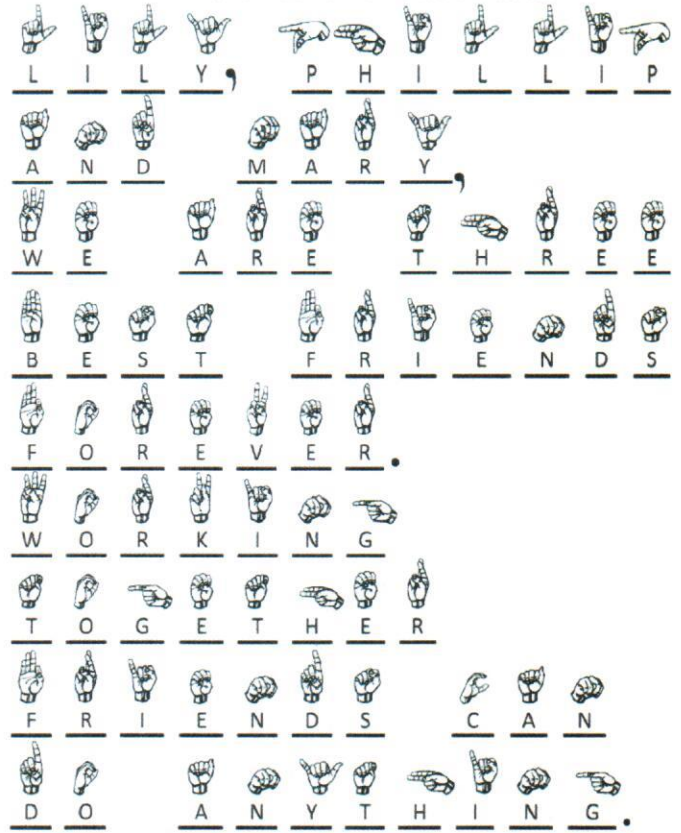
Friend House Basketball Soccer Puppy Kitten

Mom Dad Summer Spring Movie Ice Cream

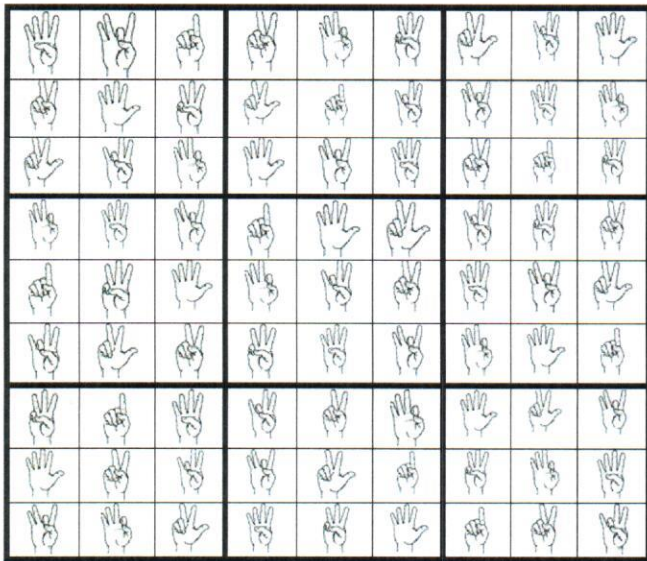
ASL ALPHABET



USE THE ASL ALPHABET TO FIND THE SECRET MESSAGE

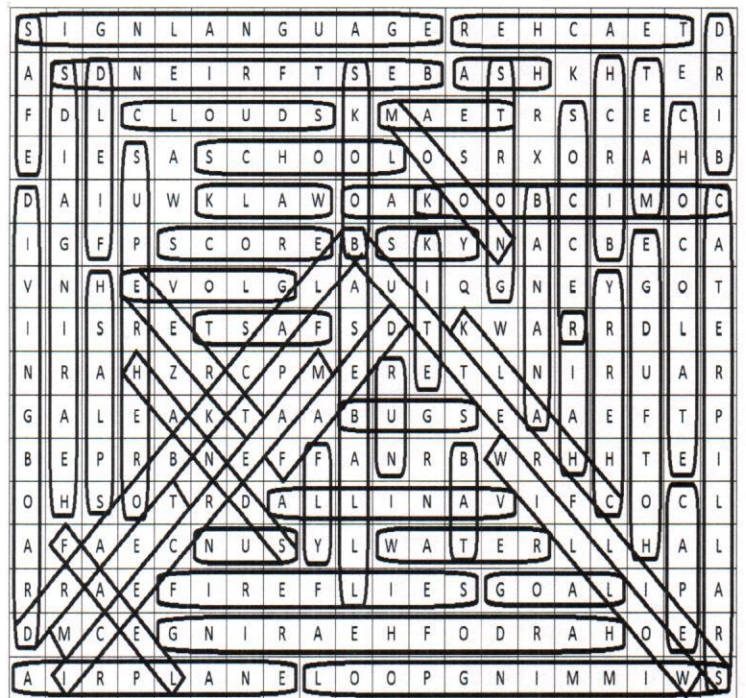


SODUKO ANSWER:



4	8	1	2	9	6	3	7	5
2	5	6	3	1	7	8	4	9
3	7	9	5	8	4	2	1	6
9	4	8	1	5	3	7	6	2
1	6	5	9	7	2	4	8	3
7	3	2	6	4	8	9	5	1
6	1	4	7	2	9	5	3	8
5	2	7	8	3	1	6	9	4
8	9	3	4	6	5	1	2	7

ENGLISH WORDFIND ANSWER



NCDHH

Nebraska Commission
for the Deaf and Hard of Hearing



Monday-Friday: 8:00 a.m. to 5:00 p.m.

Weekends & Holidays: Closed

(402) 471-3593

Video Phone (402) 506-7956

(800) 545-6244

Email: ncdhh@nebraska.gov

Web: www.ncdhh.nebraska.gov

Lincoln

4600 Valley Rd. Suite 420
Lincoln, NE 68510

Omaha

1313 Farnam 3rd Floor
Omaha, NE 68102

Kearney

620 E. 25th St. Suite 1
Kearney, NE 68847

North Platte

200 S. Silber Room 35
North Platte, NE 69101

Scottsbluff

505A Broadway Suite 1100
Scottsbluff, NE 69361

'These Are My Best Friends'

Written by: Aaron Rothenberger

Illustrated by: Kathy Scusa

Copyright © 2018 by the Nebraska Commission for the Deaf and Hard of Hearing